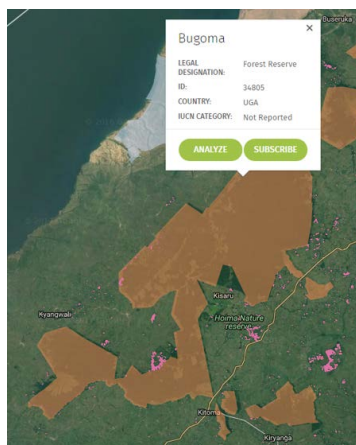


GLAD Alerts for Uganda

Global Forest Watch (GFW) is a free online tool that shows where forests are lost every week.

You can use this information to monitor deforestation in national parks like the [Rwenzori Mountains](#) or [Bugoma Forest Reserve](#), or in forested chimpanzee or gorilla habitats.

Whether you are a forest ranger, NGO protecting mountain gorillas, or journalist writing about environmental issues, you can find the information you need about forests in Uganda with GFW.



With Global Forest Watch you can:

Identify forest loss on the map, then see when and how it happened with satellite imagery.

Find, upload, or draw areas you care most about on the GFW Interactive Map – such as protected wildlife habitats – and see exactly how many deforestation alerts are detected in these areas.

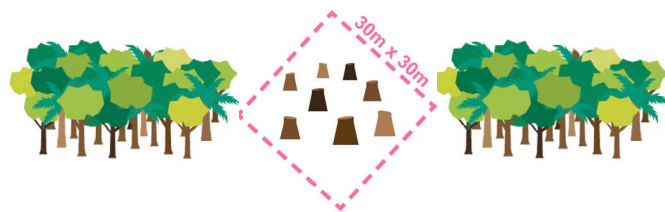
Subscribe to get email notifications straight to your inbox as soon as forest loss is detected.

Explore over 100 global and local data sets on our interactive map to see how forests are changing in conservation zones, biodiversity hotspots, and more.

Upload stories, photos and videos about your project or issues to the GFW website for the whole world to see.

How Our Satellite Alerts Work

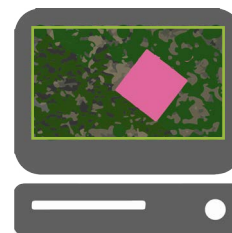
1. An area of forest is lost (by logging, disease, fire, etc.)



2. A satellite takes a picture of the forest.



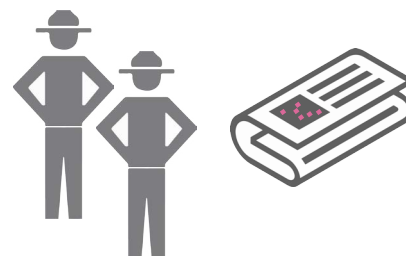
3. A computer scanning the picture finds the change in the forest pattern and labels it as a pixel of “loss.”



4. You get an alert that new forest loss has been detected.

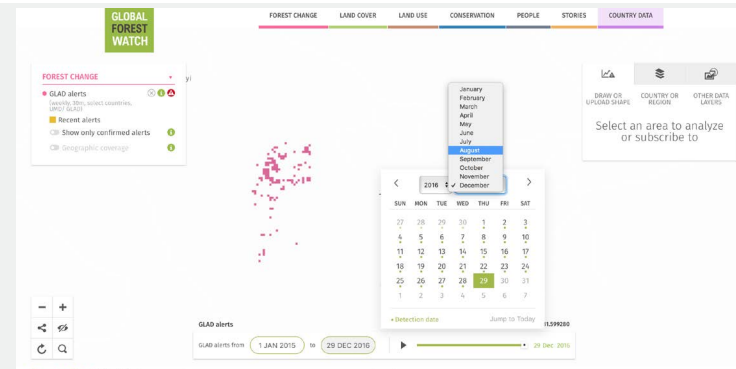


5. You send forest rangers, journalists, or community leaders to the area to investigate the forest loss or write a story about the issue.



View GLAD Alerts

1. Go to www.globalforestwatch.org/map
2. The map will automatically appear with annual tree cover loss data in pink and our annual forest gain data in blue, so go to the **Forest Change** menu tab at the top of the map and turn on **GLAD Alerts**.
3. Now zoom in on Uganda to see the alerts appear in pink.
4. Notice the timeline at the bottom of the map. GFW automatically shows alerts since 2015, but you can adjust the dates by selecting a time range from the pop-up calendars. Or, to discover when the alerts happened, press the **play** button then **pause** once the alerts appear. This gives you a clue of when the clearing might have occurred (though clouds can interfere with timely data collection).



Analyze Alerts in a Conservation Area

1. To analyze alerts in a specific area, like a forest reserve or national park, turn on the **Protected Areas** data from the **Conservation** menu. Explore additional data under other menus like **Land Cover** or see if we have data available under **Country Data** by entering "Uganda."
2. Click on the area you are interested in and a pop-up window will appear with more information.
3. Click on **Analyze** to see how many GLAD Alerts have been detected in this area so far. Adjust the dates for the analysis using the timeline.



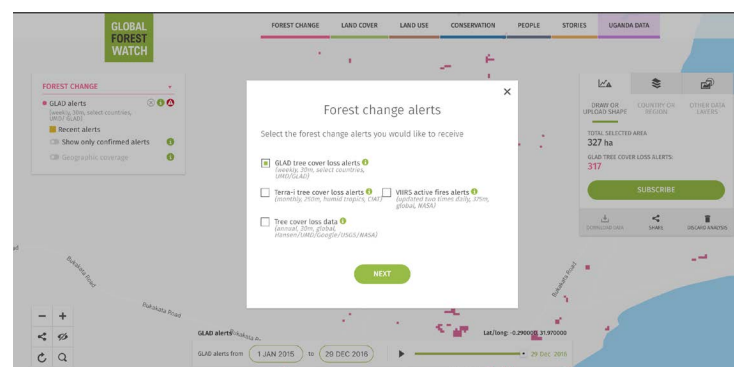
Analyze Alerts in Your Custom Areas

1. To analyze alerts in an area that doesn't appear on the GFW map, look at the window on the right-hand side of the map, where you will see **Draw or Upload Shape**.
2. If you have your own GIS file, such as a wildlife habitat you monitor or part of a national forest you patrol, drop it in this window or click to select a file from your computer. The area will appear on the map.
3. To draw a custom area on the map, select **Start Drawing**. Then click on the map to drop pins and create a shape. The shape will close when you click back on the first pin and an analysis of the area will appear in the window.



Subscribe to GLAD Alerts

1. First select an area: either a shape you click on (like a national park), a subnational area, or a custom area that you draw or upload.
2. Click on **Subscribe** to receive email alerts when there is new forest loss in this area. You will be asked to log in to **My GFW** using a Twitter, Facebook, or Google account to sign up for the alerts.
3. You will then receive a series of prompts to confirm your information, what type of data you'd like to subscribe to, and what you'd like to call this specific area. This is the name that will appear when you open **My GFW** (www.globalforestwatch.org/my_gfw/subscriptions) to manage your subscriptions.



Change Base Maps or Satellite Imagery

1. To change the map shown under the GLAD Alerts, look to the right-hand window for the second and third tabs: **Change Base Map** and **View Hi-Res Imagery**.
2. Click on **Change Base Map** to turn on your selection. **Satellite** and **Hybrid** are Google Maps views without imagery dates.
3. If you want to see high resolution satellite images from specific dates, select **View Hi-Res Imagery** and turn on **UrtheCast**. Adjust the date range of the images shown by clicking on the calendar buttons and selecting a minimum/maximum date. Click on **Open Advanced Settings** to adjust the cloud cover of the images.

